

ENGINEER TO ORDER

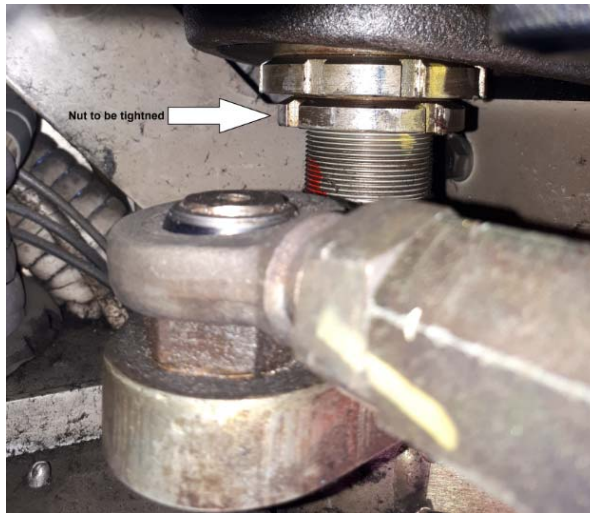
SPECIAL PROJECT INFORMATION SHEET



Project Description	Special spanner end for KM8 locknut		
Date created	August 2018	Project Number	Q4471

INTRODUCTION & APPLICATION

Railway depot application, door height adjustment requires KM8 locknut tightening to 200 N.m.



SOLUTION

Special spanner end having KM8 form and three 16mm female spigots to aid access.



TECHNICAL SPECIFICATION / DATA HIGHLIGHTS

Three 16mm female spigots each spaced 28° apart ensure that the nut notches can always be located.